

# Marian Messenger

Volume 10, Issue 11  
November 2021

Marian Manor

600 Merritt Ave. Oshkosh, WI 54901

Daylight Savings Time Ends on Sunday, November 7th. Turn your clock back 1 hour before going to bed on Saturday night November 6th.



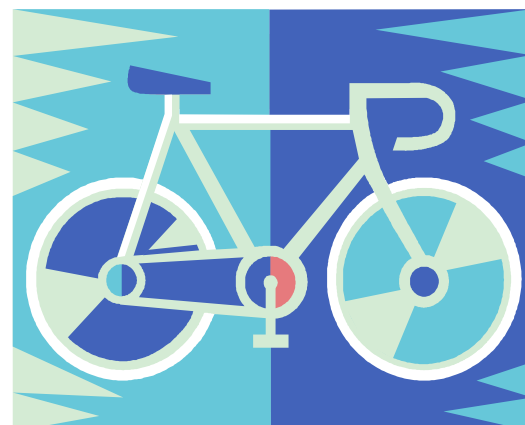
Housing Offices will be closed on Thursday, November 25th & Friday, November 26th for the Thanksgiving Holiday.

Now is the time of the year that you may want to consider turning your thermostat from the cool or auto setting to heat. If you need help adjusting your thermostat contact the Marian Manor office.



## Bike Storage

If you would like us to store your bike for the winter stop by the office. Have your bike labeled with your name and apartment number. Also all bikes must be in working order before being stored.



## FIGHT THE FLU



## THE 3 C'S

### COVER

Cover your cough and sneeze

### CLEAN

Frequently wash your hands with soap and warm water

### CONTAIN

Contain your germs by staying home if you are sick



If you have information you would like to submit for the Marian Messenger contact Mary Jo at 920-424-1470 Ext. 136 or email at [maryjos@ohawcha.org](mailto:maryjos@ohawcha.org). Please submit any material by the 20th of the month if you would like your information posted in next month's newsletter.



**Medicare Open Enrollment**

The Medicare annual election period this year will be from Friday October 15th through Tuesday, December 7th. This is the time of the year to compare plans to make sure you have the right health and prescription drug coverage. Plan costs and covered benefits can change from year to year.

During the open enrollment period you can do any of the following:

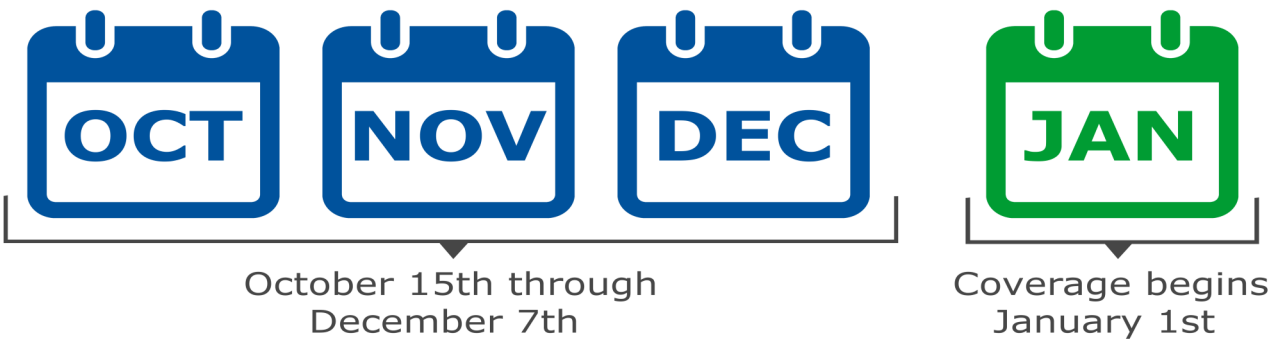
- Switch from Medicare Part A & B to an Medicare Advantage Plan (Part C)
- Switch from a Medicare Advantage Plan (Plan C) to Medicare Part A & B
- Switch from one Medicare Advantage Plan to another Medicare Advantage Plan
- Make changes in your Medicare Prescription Drug Plan (Part D)

Effective date for these changes will be Saturday, January 1, 2022

This can be a very confusing time of the year for many. Luckily there are a number of resources willing to help.

- You can go online to Medicare.gov or call 1-800-MEDICARE (1-800- 633-4227) 24 hours a day seven days a week.
- Contact Joan Jaworski, Winnebago County Benefit Specialist at 236-4685.
- Set up an appointment to see Mary Jo, Social Services Coordinator at 424-1470 Ext. 136.

This is also a good time to check and see if you qualify for the Extra Help Subsidy. Even if you did not qualify in the past, program guidelines change each year or your own situation may have changed. I strongly encourage you to look at your options before the end of November.



**Marian Manor Snowplowing Policy**

Before the snow starts to fly let’s review the snowplowing policy at Marian Manor. The parking lot will be plowed when three inches or more of snow has finished falling. Clearing of the parking lot will not be done during the snowfall, unless the snowfall is expected to be several inches or last over a couple of days. Signs will be posted at both main entrances. **When in doubt check for the signs.** You will be able to view the signs on your television, tune into channels 955 & 956 and look for the “happy plower” (as shown below) Cars will need to be removed from the lot by 11:00 am, so plowing can begin promptly at 11:30 am. If you fail to move your car a warning will be issued for the first offense. If you fail to move your car a second time you will get a \$30 fine and your car will be towed. A third offense will get another \$30 fine, your car towed and you will lose your parking privileges. When moving your car do not move it to one of the front circle parking spots as this area will be plowed as well. Do not return your car to the lot until the **entire** lot has been plowed and salted. Thank you for your cooperation in this matter, if everyone follows these guidelines the snowplowing of the parking lot goes smoothly for all.





## Who is currently eligible for a booster?

The following people who were vaccinated with Pfizer at least 6 months ago:

**SHOULD** receive a booster dose of Pfizer:

- People **65 years and older**
- People **18+ living in long-term care**
- People ages **50–64 years with certain underlying medical conditions:**
  - Cancer
  - Chronic kidney disease
  - Chronic lung diseases
  - Dementia or other neurological conditions
  - Diabetes (type 1 or type 2)
  - Down syndrome
  - Heart conditions (such as heart failure, coronary artery disease, cardiomyopathies or hypertension)
  - HIV infection
  - Immunocompromised state (weakened immune system)
  - Liver disease
  - Overweight and obesity
  - Pregnancy
  - Sickle cell disease or thalassemia
  - And more

**MAY** receive a booster dose of Pfizer after considering their individual risks and benefits:

- People ages **18–49 years with certain underlying medical conditions**
- People ages **18–64 years** who are at **increased risk for COVID-19 exposure and transmission** due to working or residing in certain settings:
  - First responders (health care workers, firefighters, police, staff at congregate care facilities)
  - Education staff (teachers, support staff, childcare workers)
  - Food and agriculture workers
  - Manufacturing workers
  - Corrections workers
  - U.S. Postal Service workers
  - Public transit workers
  - Grocery store workers
  - People who live in shared or congregate settings like shelters or correctional facilities

\*This list could be updated in the future

Learn more about booster doses:

<https://www.dhs.wisconsin.gov/covid-19/vaccine-dose.htm>



Fr. Carr will be delivering Thanksgiving meals to Marian Manor. Sign up on the bulletin board before 8 am on Friday Nov. 12th.

# November 2021

## Marian Manor Staff

**Stacy, Senior Property  
Manager**

**424-1470 Ext. 126**

Monday 8:00 am - 4:30 pm

Tuesday 8:00 am—4:30 pm

Wednesday 8:00 am - 4:30 pm

Thursday 8:00 am- 4:30 pm

Friday By Appointment Only

**Mary Jo, Social Services  
Coordinator**

**424-1470 Ext. 136**

Monday-Thursday \

8:30 am—4:30 pm

Friday 8:00 am– Noon

**Bob, Maintenance**

Monday -Thursday

6:30 am-4:30 pm

**Roger, Custodial**

Monday, Tuesday, Thursday

6:30 am –3:30 pm

Friday 6:30 am—Noon

**After Hours Maintenance**

**920-966-4235**

**Nurses- 4th Floor Office**

**424-1470 Ext 124**

**Teresa, RN**

**Lori, RN**

**Stuart Kuzik**





**Executive Director**

**424-1450 Ext. 112**

**Office Closed for Lunch**

**Noon—1:00 pm**

**FYI —Teresa, RN will be  
having open heart surgery  
on Tuesday, Oct 26th and  
will be out of the office for  
6-8 weeks. Wishing you a  
speedy recovery Teresa!!**

Sun	Mon	Tue	Wed	Thur	Fri	Sat
	1	2	3	4	5	6
<div>Just a Heads Up That Daylight Saving Time is Ending...Be Sure To Set Your Clocks Back!</div> <div></div>			2:00 pm Fire Alarm Test			
7	8	9	10	11	12	13
		Bug Day Apt. #'s 211 –220		<div></div>		
14	15	16	17	18	19	20
<div></div>						
21	22	23	24	25	26	27
	3:30 pm OHA Board Meeting			Thanks- giving  Offices Closed	Offices Closed	Offices Closed
28	29	30	<div></div>			