

# Marian Messenger

Volume 9, Issue 11  
November 2020

Marian Manor

600 Merritt Ave. Oshkosh, WI 54901

Daylight Savings Time Ends on Sunday, November 1st. Turn your clock back 1 hours before going to bed on Saturday night October 31st.



Housing Offices will be closed on Thursday, November 26th & Friday, November 27th for the Thanksgiving Holiday.

Now is the time of the year that you may want to consider turning your thermostat from the cool or auto setting to heat. If you need help adjusting your thermostat contact the Marian Manor office.



## Bike Storage

If you would like us to store your bike for the winter stop by the office. Have your bike labeled with your name and apartment number. Also all bikes must be in working order before being stored.

## FIGHT THE FLU



## THE 3 C'S

### COVER

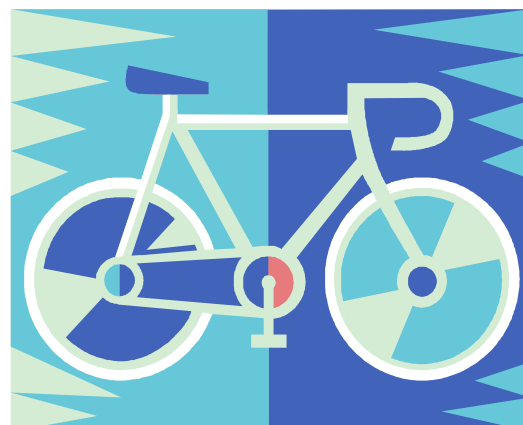
Cover your cough and sneeze

### CLEAN

Frequently wash your hands with soap and warm water

### CONTAIN

Contain your germs by staying home if you are sick



If you have information you would like to submit for the Marian Messenger contact Mary Jo at 920-424-1470 Ext. 136 or email at [maryjos@ohawcha.org](mailto:maryjos@ohawcha.org). Please submit any material by the 20th of the month if you would like your information posted in next month's newsletter.



**Medicare Open Enrollment**

The Medicare annual election period this year will be from Thursday, October 15th through Monday, December 7th. This is the time of the year to compare plans to make sure you have the right health and prescription drug coverage. Plan costs and covered benefits can change from year to year.

During the open enrollment period you can do any of the following:

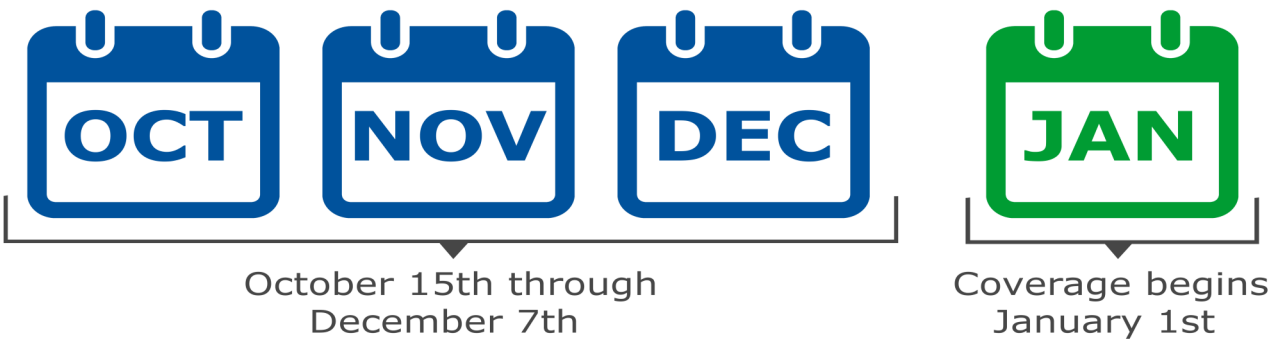
- Switch from Medicare Part A & B to an Medicare Advantage Plan (Part C)
- Switch from a Medicare Advantage Plan (Plan C) to Medicare Part A & B
- Switch from one Medicare Advantage Plan to another Medicare Advantage Plan
- Make changes in your Medicare Prescription Drug Plan (Part D)

Effective date for these changes will be Friday, January 1, 2020

This can be a very confusing time of the year for many. Luckily there are a number of resources willing to help.

- You can go online to Medicare.gov or call 1-800-MEDICARE (1-800- 633-4227) 24 hours a day seven days a week.
- Contact Joan Jaworski, Winnebago County Benefit Specialist at 236-4685.
- Set up an appointment to see Mary Jo, Social Services Coordinator at 424-1470 Ext. 136.

This is also a good time to check and see if you qualify for the Extra Help Subsidy. Even if you did not qualify in the past, program guidelines change each year or your own situation may have changed. I strongly encourage you to look at your options before the end of November.



**Marian Manor Snowplowing Policy**

Before the snow starts to fly let’s review the snowplowing policy at Marian Manor. The parking lot will be plowed when three inches or more of snow has finished falling. Clearing of the parking lot will not be done during the snowfall, unless the snowfall is expected to be several inches or last over a couple of days. Signs will be posted at both main entrances. **When in doubt check for the signs.** You will be able to view the signs on your television, tune into channels 955 & 956 and look for the “happy plower” (as shown below) Cars will need to be removed from the lot by 11:00 am, so plowing can begin promptly at 11:30 am. If you fail to move your car a warning will be issued for the first offense. If you fail to move your car a second time you will get a \$30 fine and your car will be towed. A third offense will get another \$30 fine, your car towed and you will lose your parking privileges. When moving your car do not move it to one of the front circle parking spots as this area will be plowed as well. Do not return your car to the lot until the **entire** lot has been plowed and salted. Thank you for your cooperation in this matter, if everyone follows these guidelines the snowplowing of the parking lot goes smoothly for all.



# St. Anne's Clinic– Now Open

Tuesdays 12:00pm – 4:00pm  
Saturdays 10:00am – 2:00pm



**St. Anne's Clinic** – A charitable clinic providing primary care (management of acute and chronic conditions, including mental health, preventive care, and health promotion) for the uninsured and the under-insured in the Oshkosh area community. We define under-insured as having insurance but not being able to afford to use it. We won't charge our patients any fees for service. We won't turn anyone away for inability to pay. We will gratefully accept donations from those who are able to afford to donate.

To become a patient of ours, please call 920-234-6970.  
**AA Meetings** – AA meetings are held every Saturday from 10:00am – 11:00am.  
**Counseling** – We offer onsite counseling for our patients.  
**Chiropractic Care** – We offer onsite chiropractic care for our patients.



St. Anne's clinic is located at 449 High Ave. Oshkosh. (Formerly St. Peter's School)

Interested in volunteering? Please complete our [volunteer application](#) or email [info@watercitycaremission.org](mailto:info@watercitycaremission.org).

As we continue to remain "Safer at Home" during this coronavirus pandemic it becomes more and more difficult for me to make sure all of your needs are being met.

Please complete and return this survey to the Marian Manor drop box by Monday, November 9th. If you need another copy of the calendar on the backside of this page let me know. (but let's face it there is not much going on)

What are your current needs that are not being met (Examples- having enough food, social contact, getting to medical appointments etc....) \_\_\_\_\_

What is the best way for me to contact you:

\_\_\_\_\_ Calling, list best phone number to reach you at \_\_\_\_\_

\_\_\_\_\_ Email, list email address: \_\_\_\_\_

How often would you prefer to be contacted: Circle one

Weekly                      Every other week                      Monthly                      Other \_\_\_\_\_

Is there anything else you would like me to know? \_\_\_\_\_

Feel free to contact me with any questions or concerns at 920-424-1470 Ext. 136

or email me at [maryjos@ohawcha.org](mailto:maryjos@ohawcha.org)



Fr. Carr will be delivering Thanksgiving meals to Marian Manor.  
Sign up on the bulletin board before 8 am on Friday Nov. 13th.



# November 2020

## Marian Manor Staff

**Stacy, Senior Property  
Manager**

**424-1470 Ext. 126**

Monday 8:00 am - 4:30 pm

Tuesday 8:00 am—4:30 pm

Wednesday 8:00 am - 4:30 pm

Thursday 8:00 am- 4:30 pm

Friday By Appointment Only

**Mary Jo, Social Services  
Coordinator**

**424-1470 Ext. 136**

Monday-Thursday \

8:30 am–4:30 pm

Friday 8:00 am– Noon

### Bob, Maintenance

Monday -Thursday

7:00 am-4:30 pm

Friday 7:00 am- 11:00 am

## Roger, Custodial

Monday, Tuesday, Thursday

6:30 am – 3:30 pm

Friday 6:30 am—Noon

**After Hours Maintenance**  
**920-966-4235**

### Nurses- 4th Floor Office

**424-1470 Ext 124**

**Teresa, RN**





**Su van Houwelingen,**

## Executive Director

424-1450 Ext. 112

**Office Closed for Lunch**

**Noon—1:00 pm**

Sun	Mon	Tue	Wed	Thur	Fri	Sat
1	2	3	4	5	6	7
<div>Just a Heads Up That Daylight Saving Time is Ending...Be Sure To Set Your Clocks Back!</div> <div></div>			2:00 pm Fire Alarm Test			
8	9	10	11	12	13	14
		Bug Day Apt. #'s 211 –220	<div></div>			
15	16	17	18	19	20	21
<div></div>						
22	23	24	25	26	27	28
3:30 pm OHA Board Meeting				Thanks- giving Offices Closed	Offices Closed	
29	30	<div></div>				